



# GAT MONTHLY MEMBERSHIP PROGRESS REPORT

Results as of: 7/31/2022

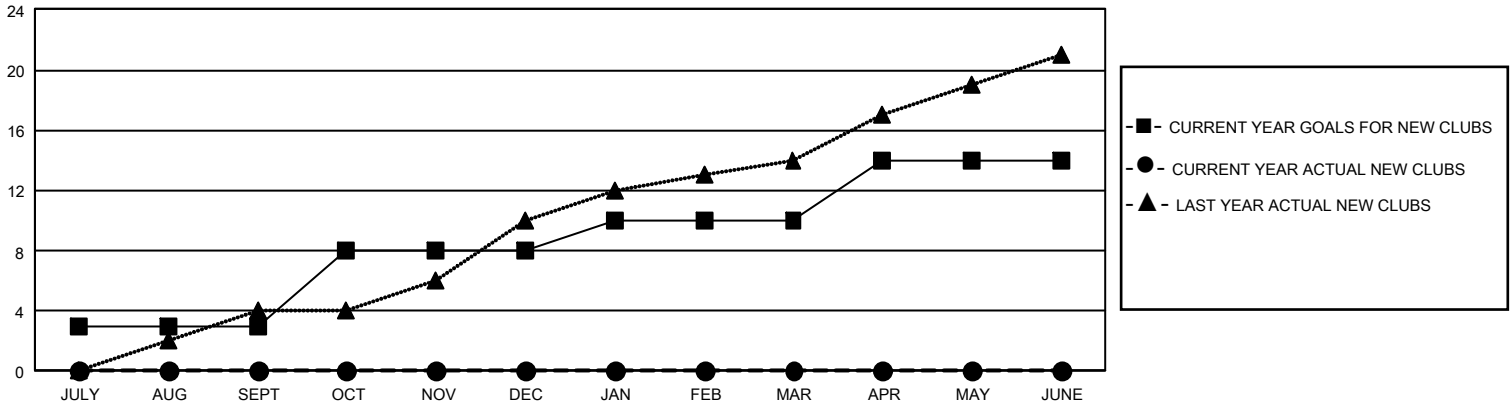
## GMT Constitutional Area 8, Group D

REPORT DOES NOT INCLUDE CLUBS IN UNDISTRICTED AREAS.

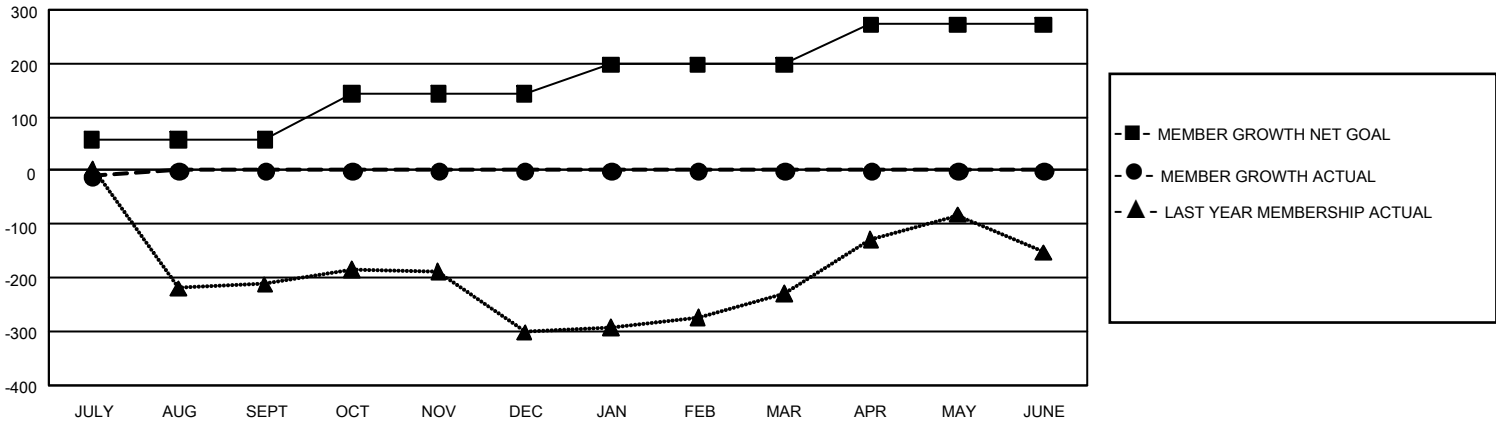
Clubs			
RESULTS FOR 2022-2023			
QUARTER	NEW CLUB GOAL	NEW CLUBS	DROPPED CLUBS
JULY/AUG/SEPT	9	0	1
OCT/NOV/DEC	15	0	0
JAN/FEB/MAR	6	0	0
APR/MAY/JUNE	12	0	0

Members			
RESULTS FOR 2022-2023			
QUARTER	MEMBER GROWTH NET GOAL	MEMBER GROWTH ACTUAL	DROPPED MEMBERS ACTUAL (including transfers)
JULY/AUG/SEPT	58	54	54
OCT/NOV/DEC	85	0	0
JAN/FEB/MAR	55	0	0
APR/MAY/JUNE	75	0	0

GOALS AND ACTUAL NEW CLUBS CUMULATIVE



GOALS AND ACTUAL MEMBERS CUMULATIVE



DROPPED CLUBS: 1	13 CLUBS OF 186 ADDED 1 OR MORE NEW MEMBERS	<u>GENDER DISTRIBUTION</u>	
<u>DROPPED MEMBERS</u>		MALE	1,626 (40.27%)
DECEASED	1	FEMALE	2,407 (59.61%)
CLUB CANCELLED	0	NON BINARY	1 (0.02%)
OTHER	53	PREFER NOT TO ANSWER	4 (0.10%)
TOTAL	54	TOTAL FAMILY UNIT MEMBERS	623
	<a href="#">CLICK HERE FOR CUMULATIVE MEMBERSHIP DATA</a>	FAMILY MEMBERS PAYING HALF DUES	370